

Tiedote kalastusaluksille ja viranomaisille  
Information för fiskefartyg och myndigheter  
Information for Fishing vessels and authorities

Luode Consulting Oy tekee ympäristömittauksia 3+12 kohteessa Selkämerellä ja Ahvenanmaan vesillä. Mittausajankohta 10/2023 – 11/2024.

Luode Consulting Oy kommer att utföra miljömätningar på 3+12 platser i Bottenhavet och Ålands vatten. Tidperiod 10/2023 – 11/2024

Luode Consulting Oy carries out environmental measurements at 3+12 sites in the Bothnian Sea and Åland waters. Measurement period 10/2023-11/2024.

<b>Operator:</b>	Luode Consulting Oy Person in charge: Antti Lindfors Tel: +358 50 5900 694 E-mail: antti.lindfors@luode.net
<b>Installed instruments and locations</b>	<b>CURRENT AND WATER QUALITY MONITORING</b> <ul style="list-style-type: none"><li>▪ ADCP-1 60° 36.62' N 20° 14.00' E Water depth ~52 m</li><li>▪ ADCP-2 60° 44.20 N 20° 7.30 E Water depth ~66 m</li><li>▪ ADCP-3 60° 43.10 N 19° 37.87 E Water depth ~75 m</li></ul> <b>UNDERWATER NOISE AND MARINE MAMMAL MONITORING</b> <ul style="list-style-type: none"><li>▪ Fpod-1 60° 36.81 N 20° 23.27 E Water depth ~46 m</li><li>▪ Fpod-2 60° 36.67 N 20° 14.32 E Water depth ~52 m</li><li>▪ Fpod-3 60° 33.82 N 20° 0.81 E Water depth ~50 m</li></ul>

	<ul style="list-style-type: none"> <li>▪ Fpod-4 60° 37.00 N 19° 38.57 E Water depth ~64 m</li> <li>▪ Fpod-5 60° 40.42 N 19° 48.10 E Water depth ~61 m</li> <li>▪ Fpod-6 60° 40.82 N 19° 57.88 E Water depth ~64 m</li> <li>▪ Fpod-7 60° 46.00 N 20° 11.10 E Water depth ~67 m</li> <li>▪ Fpod-8 60° 43.49 N 20° 21.40 E Water depth ~56 m</li> <li>▪ Fpod-9 60° 43.01 N 19° 28.47 E Water depth ~72 m</li> <li>▪ Fpod-10 60° 42.89 N 19° 37.70 E Water depth ~76 m</li> <li>▪ Fpod-11 60° 46.60 N 19° 59.59 E Water depth ~68 m</li> <li>▪ Fpod-12 60° 44.74 N 19° 50.79 E Water depth ~78 m</li> </ul>
<b>Measurement end date</b>	31-November-2024
<b>CPA</b>	No fishing or anchoring closer than 0,5 NM
<b>In case of accidents</b>	Please contact Luode Consulting Oy

- ◆ Current and water quality monitoring
- Underwater noise and marine mammal monitoring
- ▭ Project areas
- EEZ -zone

0 10 20 30 40 50 km

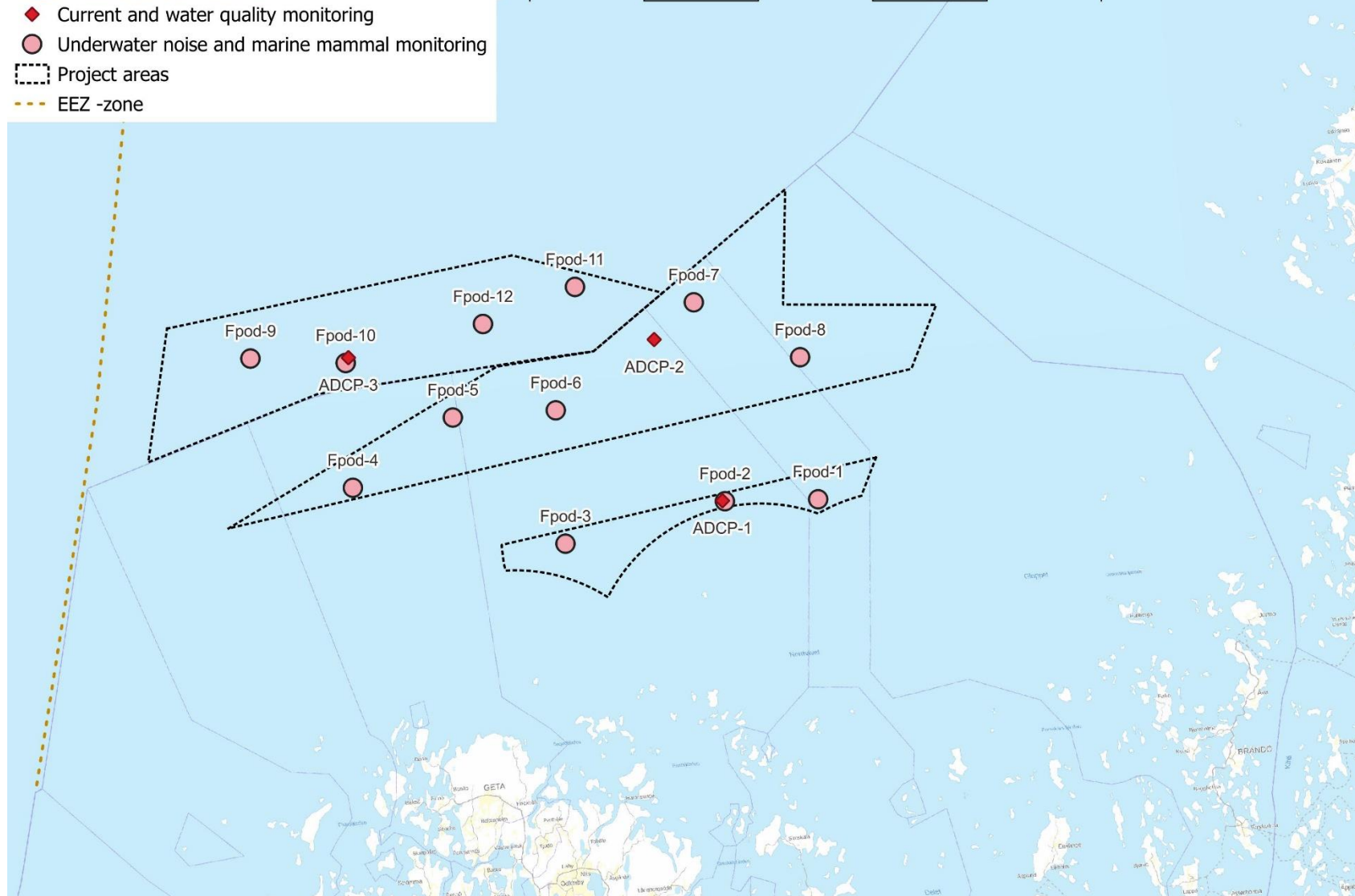


Figure1. Monitoring locations. © Luode Consulting Oy.

Installation report Åland, 31-10-2023, Luode Consulting Oy

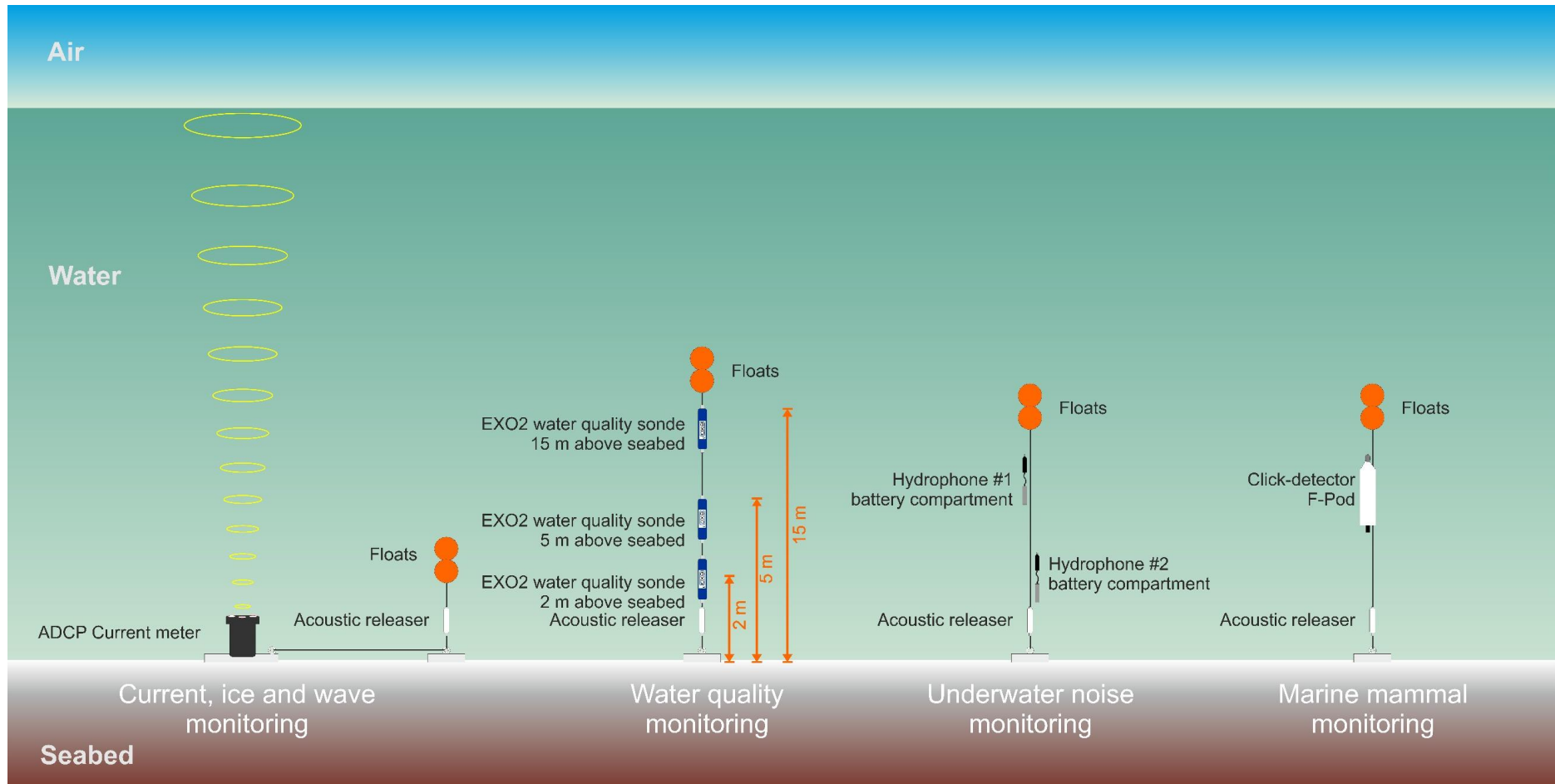


Figure 2. Schematic illustration of monitoring setup, not in scale. © Luode Consulting Oy.