

FOR THOSE OF YOU WHO FISH IN
THE SOUTHEASTERN BALTIC

INFORMATION ON CABLE LAYING IN THE BALTIC

This is the fourth information sheet about the laying of the electrical inter-connection NordBalt between Klaipėda in Lithuania and Sandvik south of Kalmar. The aim is to give you who fish or pursue other shore activities in the area information about where and when the work is done.

After a winter break work resumed on April 1 to put down NordBalt's cable package on the Baltic seabed. Now the work to lay the last 150 of a total of 400 km towards the Swedish coast remains. In early June, the last length of the cable package is to be in place.

FISHING RESTRICTIONS

Fishing with bottom trawls or similar is not permitted to occur along the route shown on the next page (kpP78-400), as it could be a danger for people fishing, equipment and cable. Guard boats are instructed to remove fishing boats that fish the cable route. A guard boat will accompany the cable laying ship on the kp300-400 route to ensure that all other shipping traffic keeps a safe distance of at least 500 m.

GRAND CANYON II WILL FLUSH DOWN THE CABLE

In mid-May, the cable will start to be flushed into the sea bed with a so-called flushing machine. It is done in a separate operation planned with the vessel Grand Canyon II. Flushing work will take place

between KP78-KP400 from May to late August.

The ship passes at least three times over the route, first to verify the cable's position and the absence of physical barriers with a base survey, then to flush and finally to perform an investigation to confirm that the cable is protected. The vessel moves approximately 150-800 m/hr. These operations can be carried out down to about 12 meters of water. During the season the vessel will even do complementary work between kp78 and KP 250 to improve the protection of the cables.

STONE PLACEMENT WHERE FLUSHING IS NOT POSSIBLE

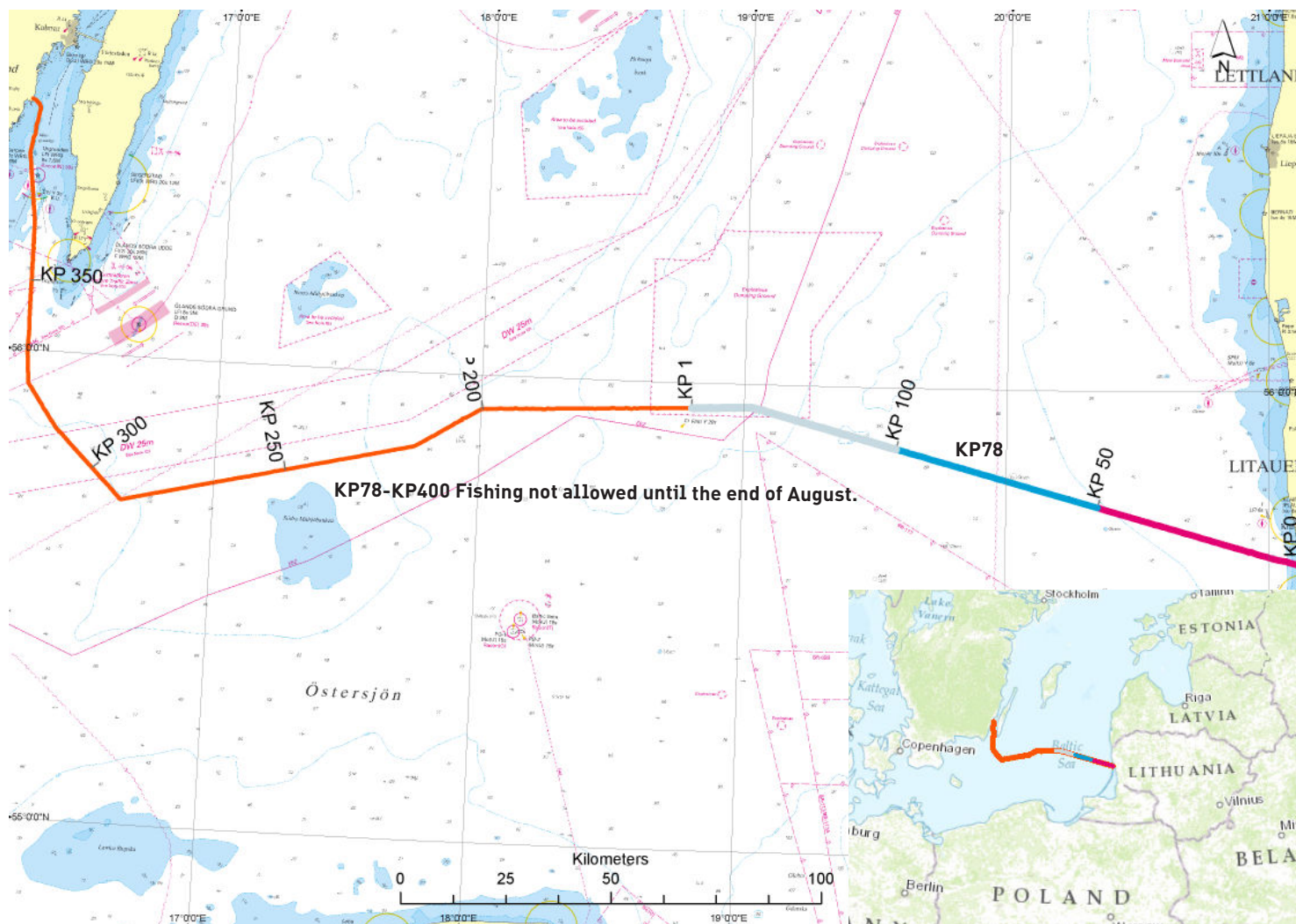
In the areas where flushing is not possible, the cable will be protected with stone placed from a yet unnamed ship. Work will take place on these selected sites from kp78 to the Swedish mainland. Stone placement will start in August.

EXCAVATION WORK NEAR THE COAST STARTED IN APRIL

In water deeper than 12 meters a ditch is to be dug from the beach at landfall in Sandvik and around 2 km out along the planned cable route. Once the cable has been placed into the ditch, it will be refilled. The area to be excavated will be clearly marked with buoys, the exterior with light signals. Excavation work begun in mid-April. Backfilling and installation of protection from pack ice will start in mid-June and last for a few weeks.

ATTENTION!

For all sea operations ABB issues Notice to Mariners according to established procedures.



CONTACT:

EMMA GRUBBSTRÖM, project leader
Telephone: +46 (0)10-475 83 83
E-mail: emma.grubbstrom@svk.se

ELIN DRUGGE, communications officer
Telephone: +46 (0)10-475 80 54
E-mail: elin.drugge@svk.se

Editor: Elin Drugge, tel. +46 (0)10 475 80 54
Publisher responsible:
Malin Werner, tel. +46 (0)10 475 82 64

Svenska kraftnät is a state enterprise with the task of managing the Swedish national grid for electricity, which covers 400 kV and 220 kV lines with stations and overseas connections. We are also system operator for electricity. Svenska kraftnät develops the national grid and electricity to meet society's need for safe, environmentally friendly and economical power supply. As a result, we also have an important role in climate policy.

SVENSKA KRAFTNÄT
BOX 1200
S-172 24 SUNDBYBERG
STUREGATAN 1

TEL +46 (0)10 475 80 00
FAX +46 (0)10 475 89 50
WWW.SVK.SE

 **SVENSKA
KRAFTNÄT**