

FOR THOSE OF YOU WHO FISH IN
THE SOUTHEASTERN BALTIC

INFORMATION ON CABLE LAYING IN THE BALTIC

This is the first issue of a regular newsletter on NordBalt cable laying between Klaipeda in Lithuania and Sandvik south of Kalmar in Sweden. The aim is to give you who fish or pursue other activities on the water in the area, information about where and when cable laying takes place.

CABLE LAYING BEGINS IN APRIL

The first 150 kilometres of the 400 kilometre long cable will be laid during the period April-June 2014, starting at the Lithuanian coast. The cable will be laid by ABB using cable ship Topaz Installer. Another 100 kilometres will be laid in July. The last 150 kilometres towards the Swedish coast will be laid in the summer of 2015

SAFETY DISTANCE OF 500 METRES

During the period April - June, parts of the cable will lie unprotected on the sea floor. Ships in the area are advised to keep a safe distance of at least 500 meters. To prevent the cable or vessels and their equipment being damaged the stretch will be guarded by leased patrol vessels.

The cable will be protected by being flushed into the seabed. Flushing begins in June and will be performed by the vessel Deep Cygnus. Once the cable is flushed, you can fish where it lies.

REDUCED NAVIGATION CAPABILITY

It is important to know that the vessels used in

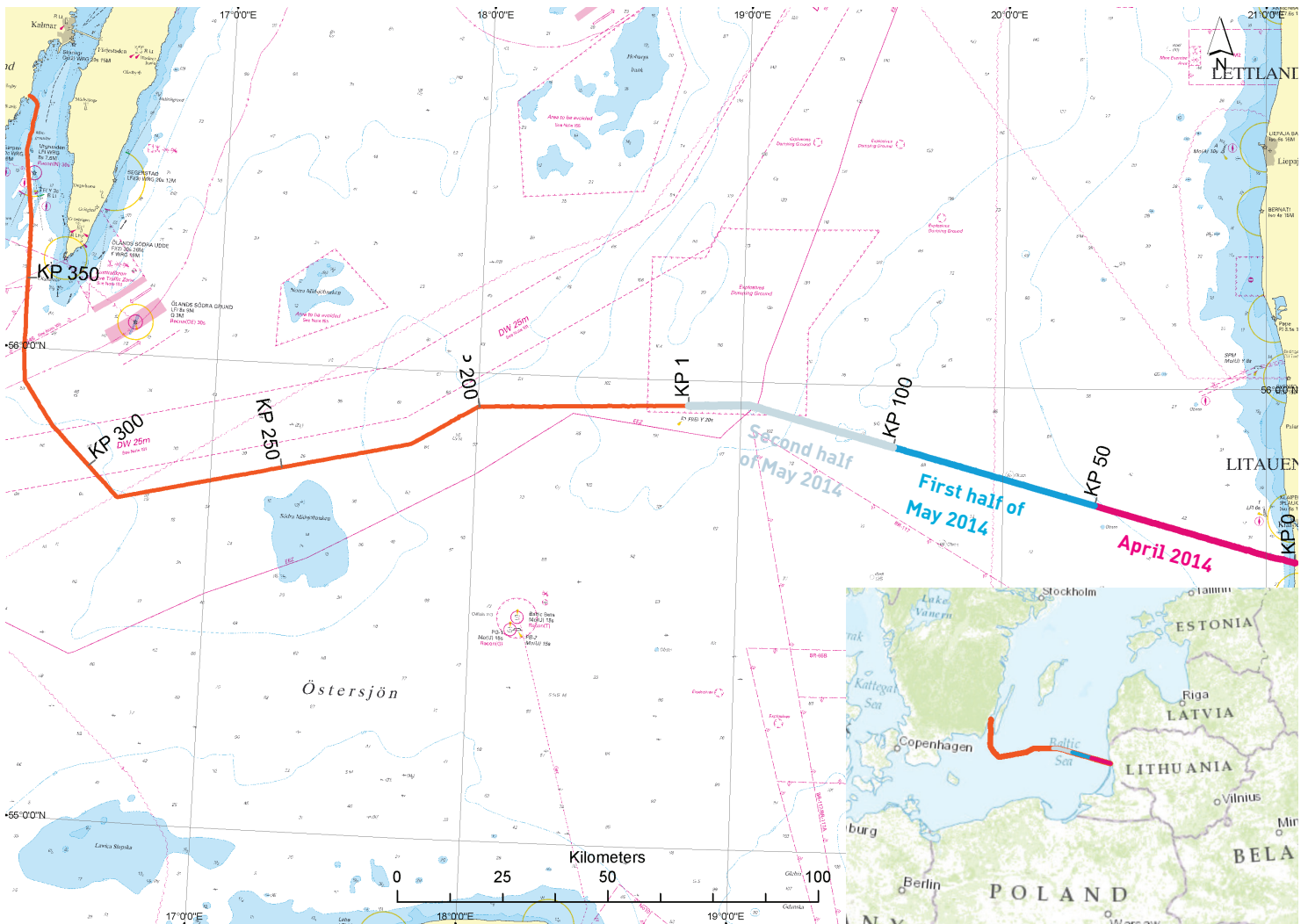


The vessel Topaz Installer is being used to lay down the first 150 kilometres of cable from the Lithuanian coast.

cable laying and flushing have impaired navigation capabilities. They follow the cable route and may not deviate from its course when work is in progress. On the back of this information sheet you will find a map marked with the cable route.

QUESTIONS

If you have any questions please feel free to get in touch with our communications officer Elin Drugge. You can find her contact information on the back.



Different sections are marked with different colours. You can even see there when the cable ship will work with each stage of the route. A larger version of the map above can be downloaded from www.svk.se/NordBalt.

KONTAKTPERSONER:



IDA DUFVA, project leader
 Telephone: +46 (0)10-475 83 20
 E-mail: ida.dufva@svk.se



ELIN DRUGGE, communications officer
 Telephone: +46 (0)10-475 80 54
 E-mail: elin.drugge@svk.se

Editor: Daniel Carpsjö, tel. +46 (0)10 475 84 82
 Publisher responsible:
 Malin Werner, tel. +46 (0)10 475 82 64

Svenska kraftnät is a state enterprise with the task of managing the Swedish national grid for electricity, which covers 400 kV and 220 kV lines with stations and overseas connections. We are also system operator for electricity. Svenska kraftnät develops the national grid and electricity to meet society's need for safe, environmentally friendly and economical power supply. As a result, we also have an important role in climate policy.

SVENSKA KRAFTNÄT
 BOX 1200
 S-172 24 SUNDBYBERG
 STUREGATAN 1

TEL +46 (0)10 475 80 00
 FAX +46 (0)10 475 89 50
 WWW.SVK.SE

